

# Prehistoric Ohio

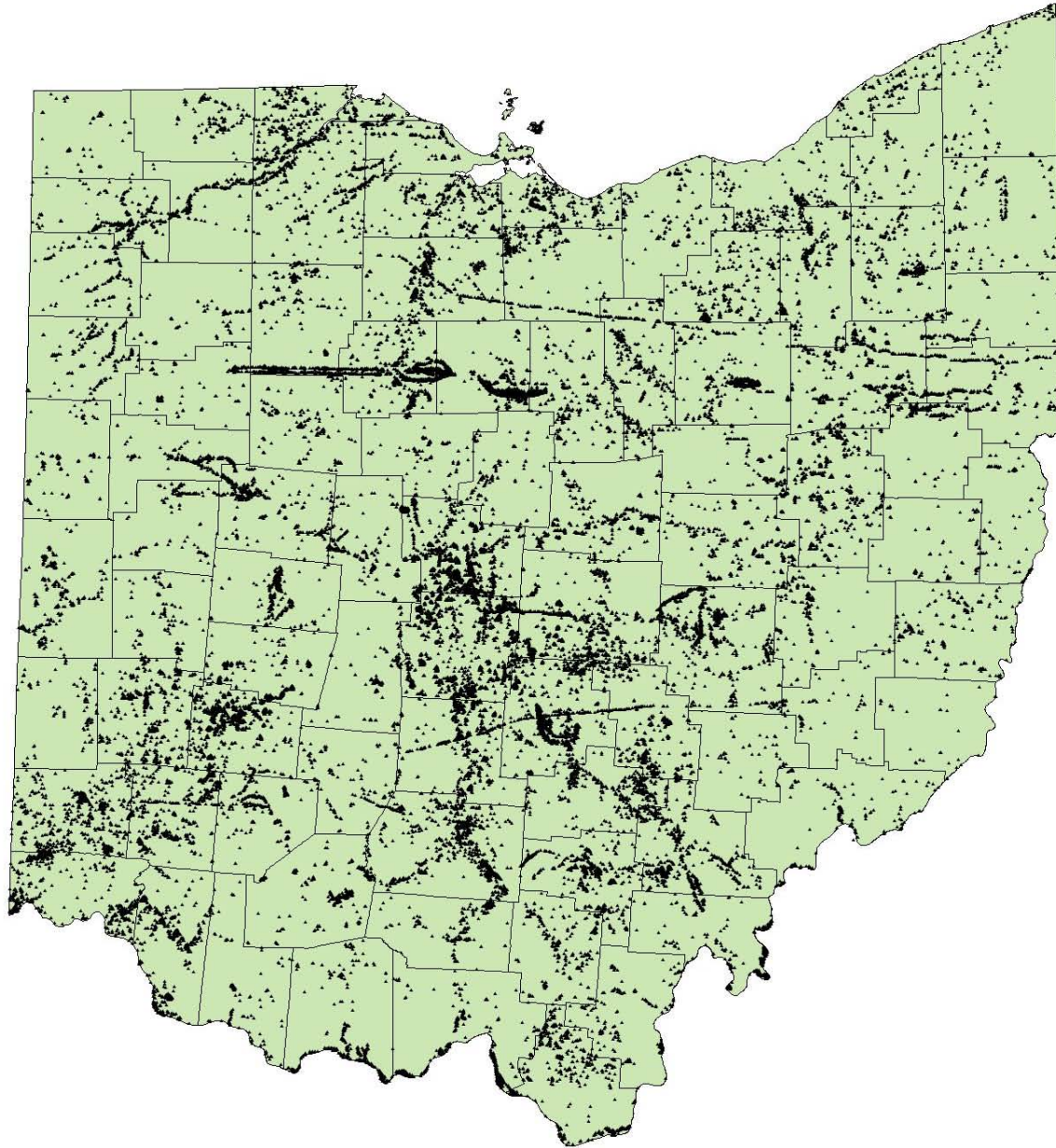
## An Introduction to the Archaeological Cultures of Ohio

12/15/2008

Presentation prepared by:  
Kevin C. Nolan, MA  
Department of Anthropology  
The Ohio State University

Funding provided by the Ohio Historic Preservation Office  
and the National Science Foundation

# Ohio's Prehistoric Sites



# Archaeological Time Periods

## ● **PaleoIndian**

- 14,000-9,500 BC

## ● **Archaic**

- 9,500-500 BC

## ● **Woodland**

- ~800 BC – AD 1000

- **Early** ~800 BC – AD 1

- **Mid** ~50 BC – AD 500

- **Late** AD 500 – 1000

## ● **Late Prehistoric**

- AD 1000 – 1540

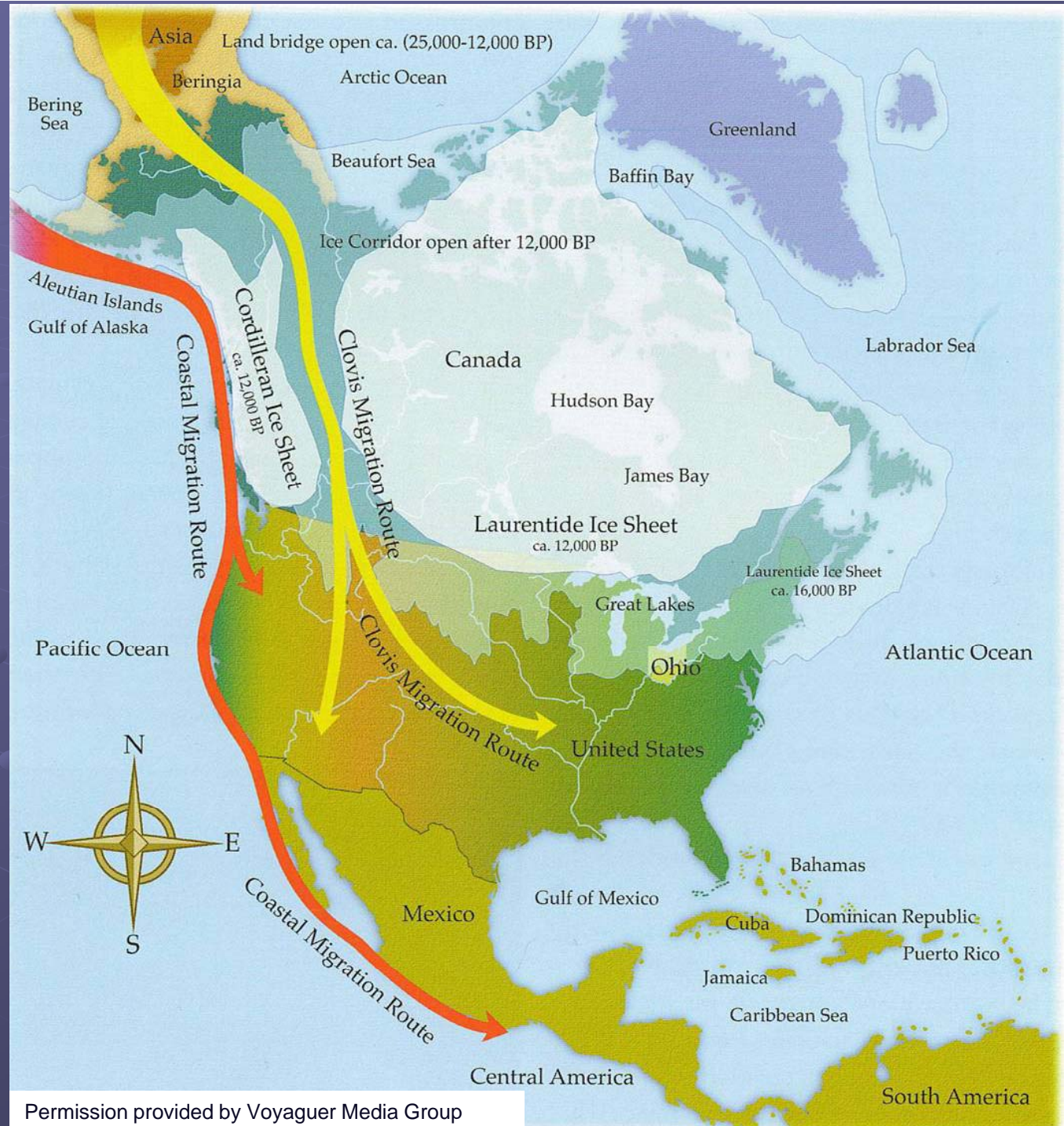
## ● **Protohistoric**

- AD 1540 – 1795

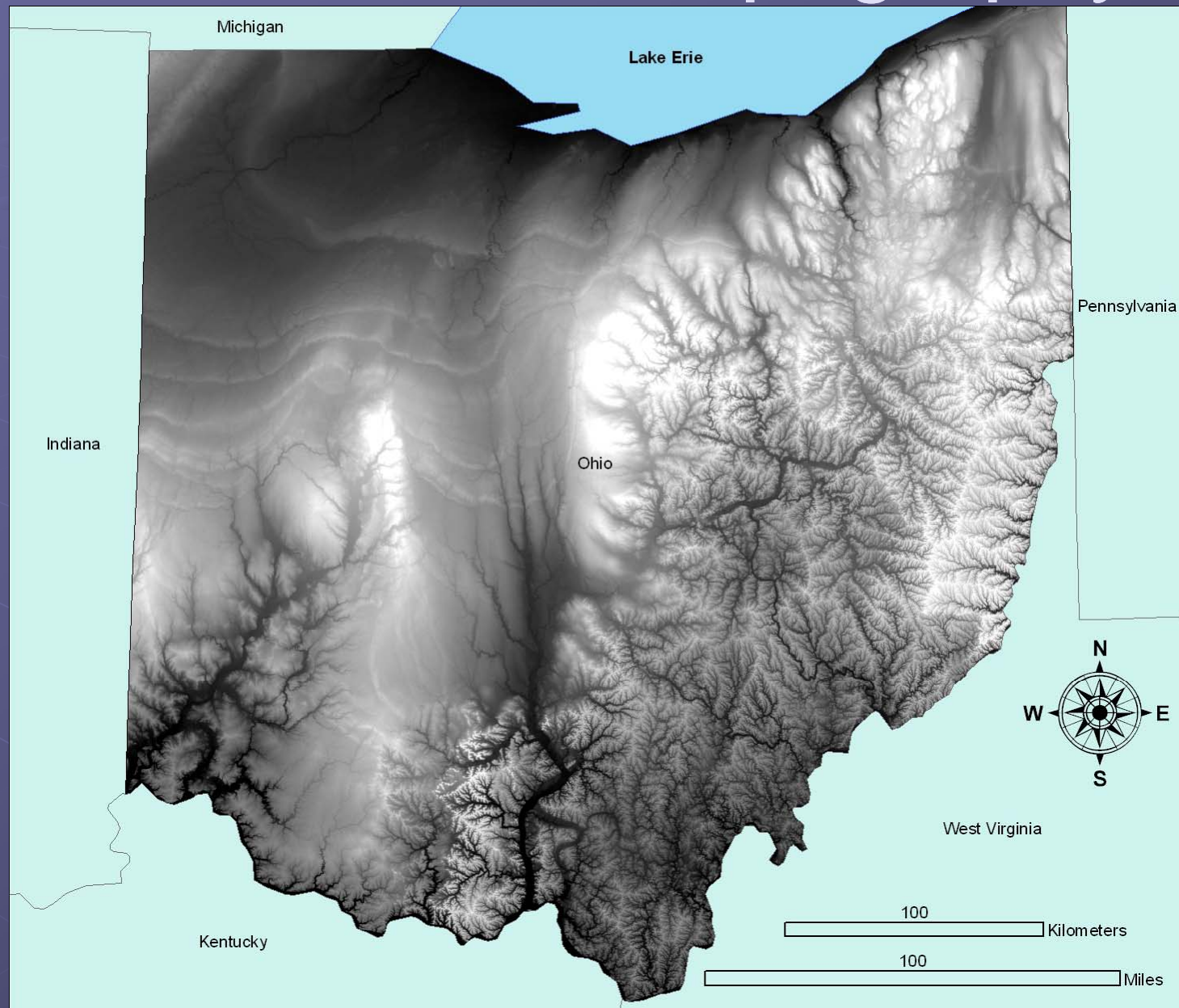


# Discovery of the “New World”

The Americas are  
settled by people  
from Asia



# Glaciers and Topography





# The Paleoindian Period

Highly nomadic hunters and gather's

14,000 to 9,500 BC

[www.nmnh.si.edu](http://www.nmnh.si.edu)



Image provided by Voyageur Media Group website





# The Archaic Period

Hunter-gatherer's in a warming climate

9,500 to 600 BC



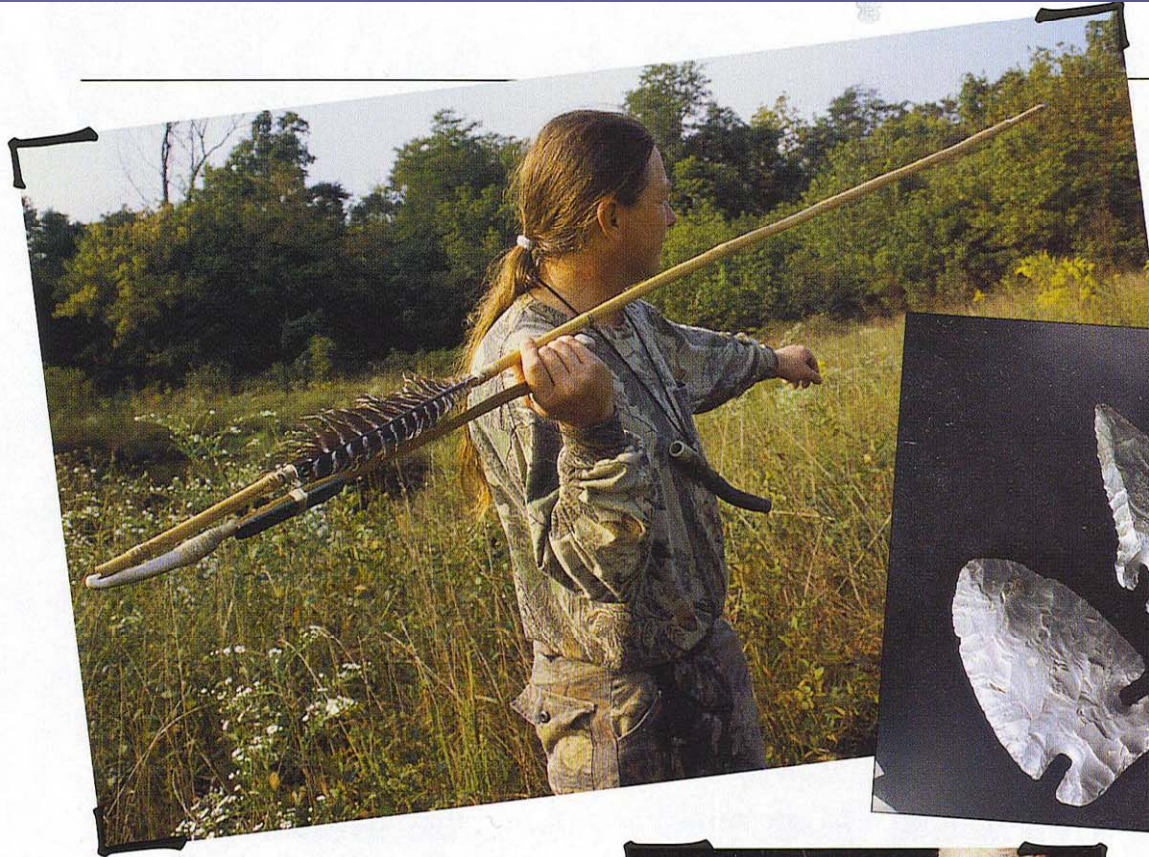
Image provided by Voyageur Media Group website



Permission provided by Voyageur Media Group



# Archaic Technology



Permission provided by Voyager Media Group



# The Early Woodland Period

Increased sedentism and increased ceremonialism

700 BC to 1 AD

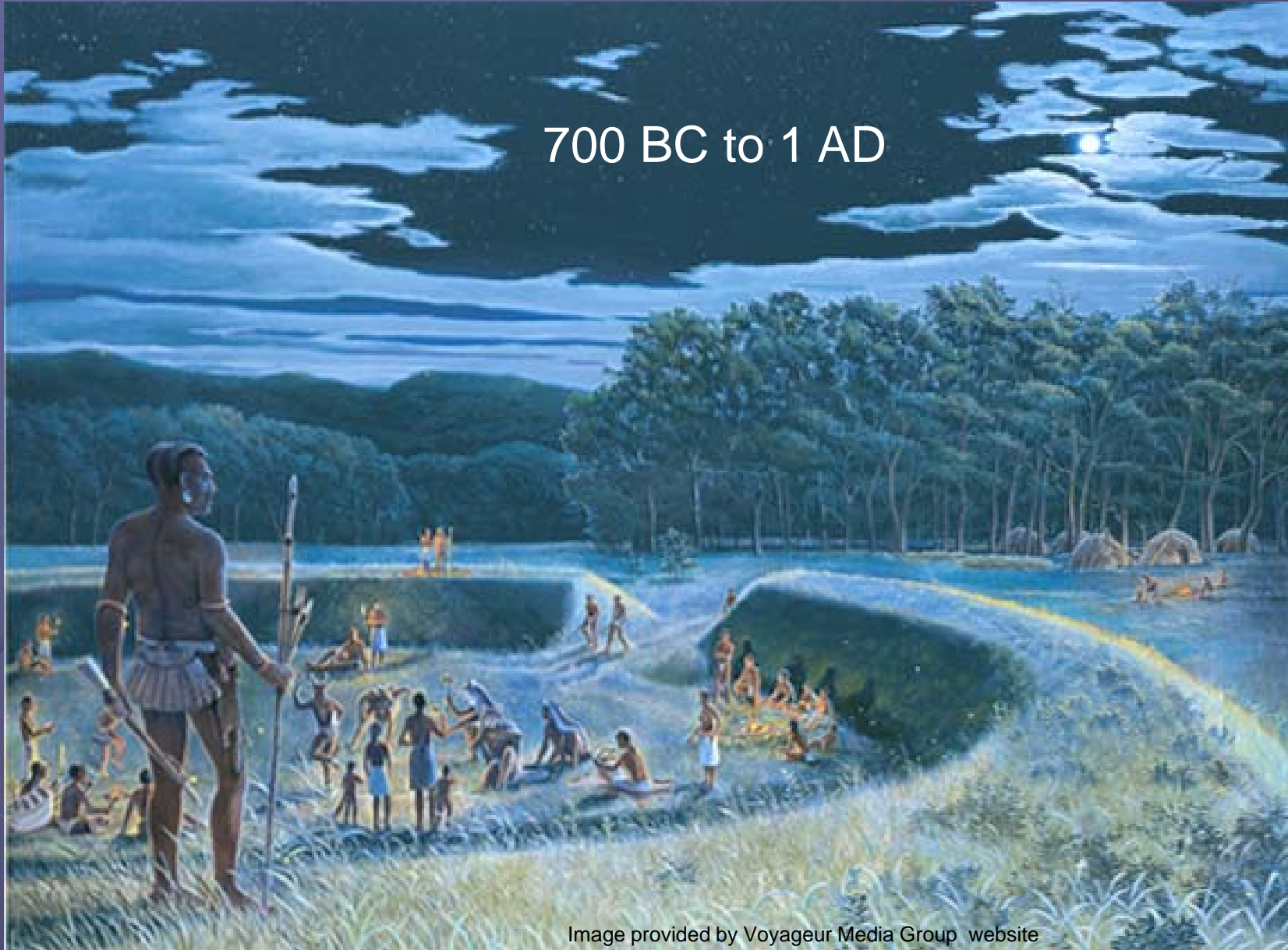
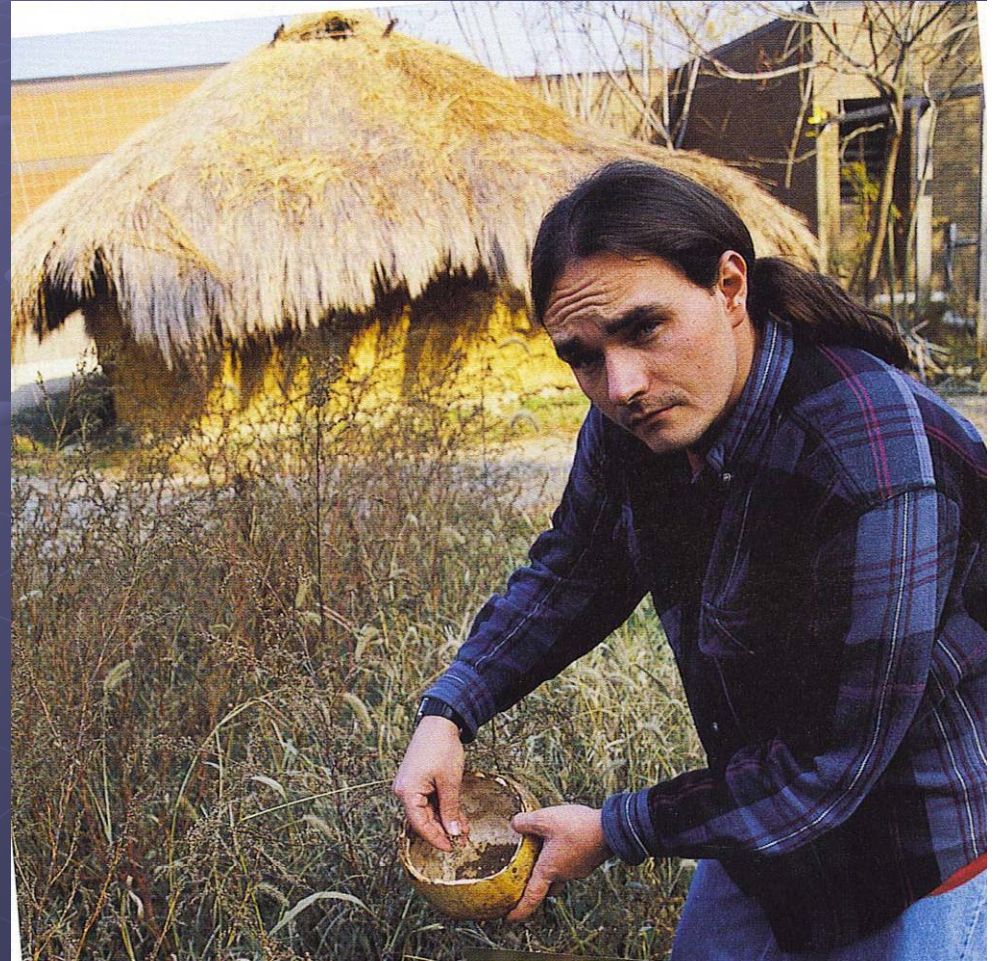
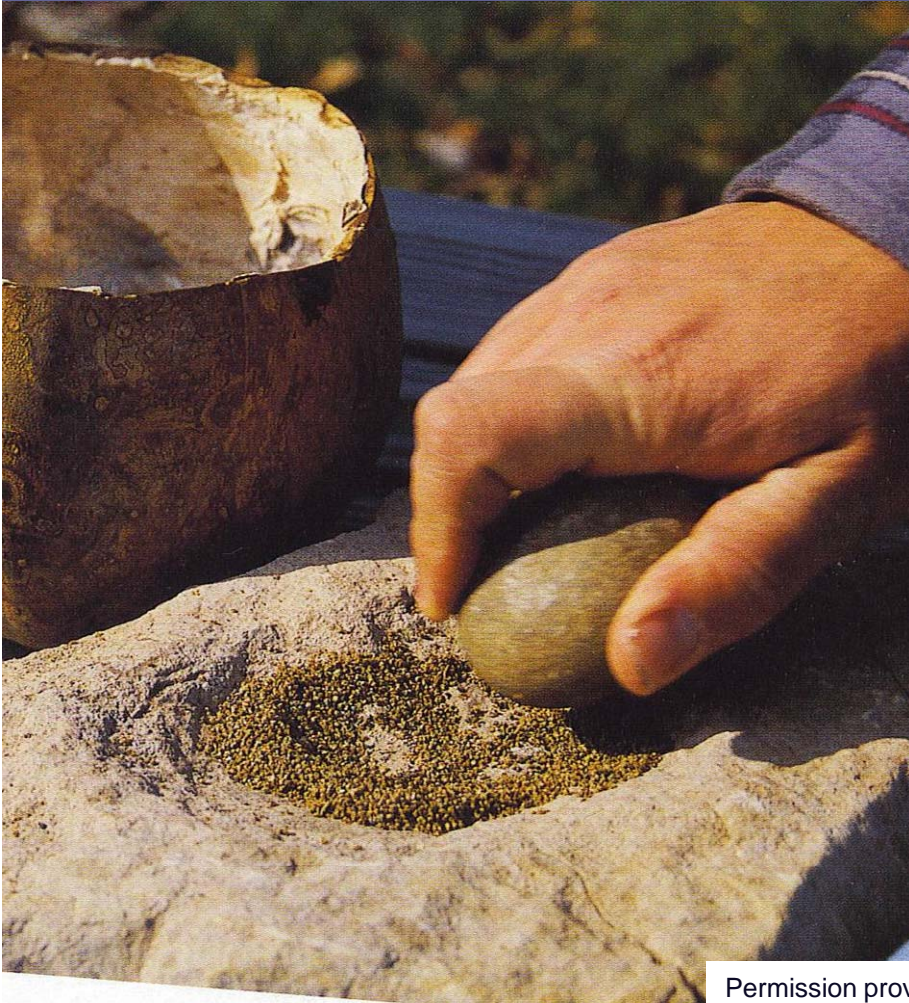


Image provided by Voyageur Media Group website



# Early Woodland Innovations

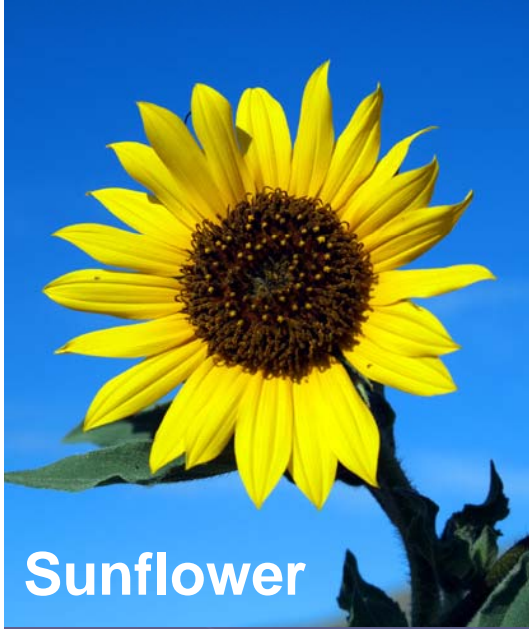
Gathering of plants leads to the establishment of cultigens



Permission provided by Voyager Media Group



# Eastern Agricultural Complex



**Sunflower**

[www.nps.gov](http://www.nps.gov)

Edible native species were first gathered and soon cultivated



**Knotweed**

[www.cas.sc.edu](http://www.cas.sc.edu)



**Maygrass**

[www.museum.state.il.us](http://www.museum.state.il.us)



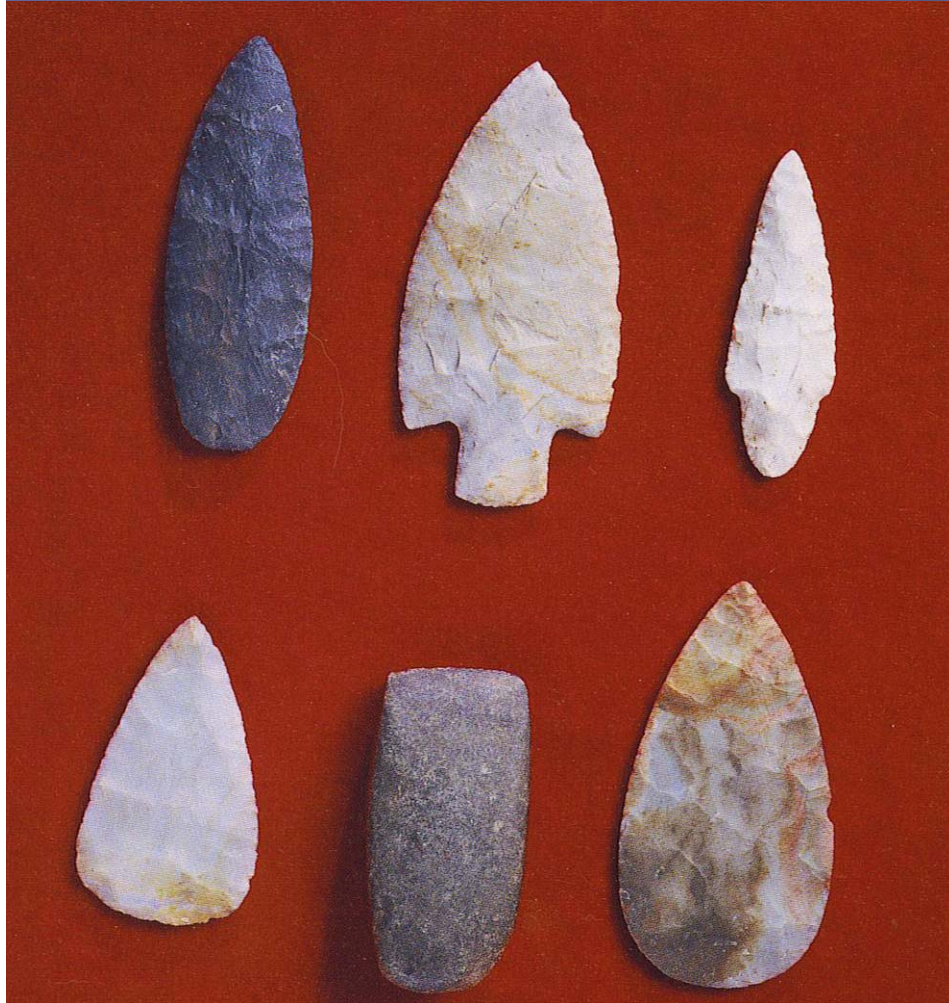
**Sumpweed**

[www.museum.state.il.us](http://www.museum.state.il.us)



# Early Woodland Period Technology

Ceremonial flint blades



Agriculture likely lead to the development of clay ceramics





# Pottery



Permission provided by Voyager Media Group

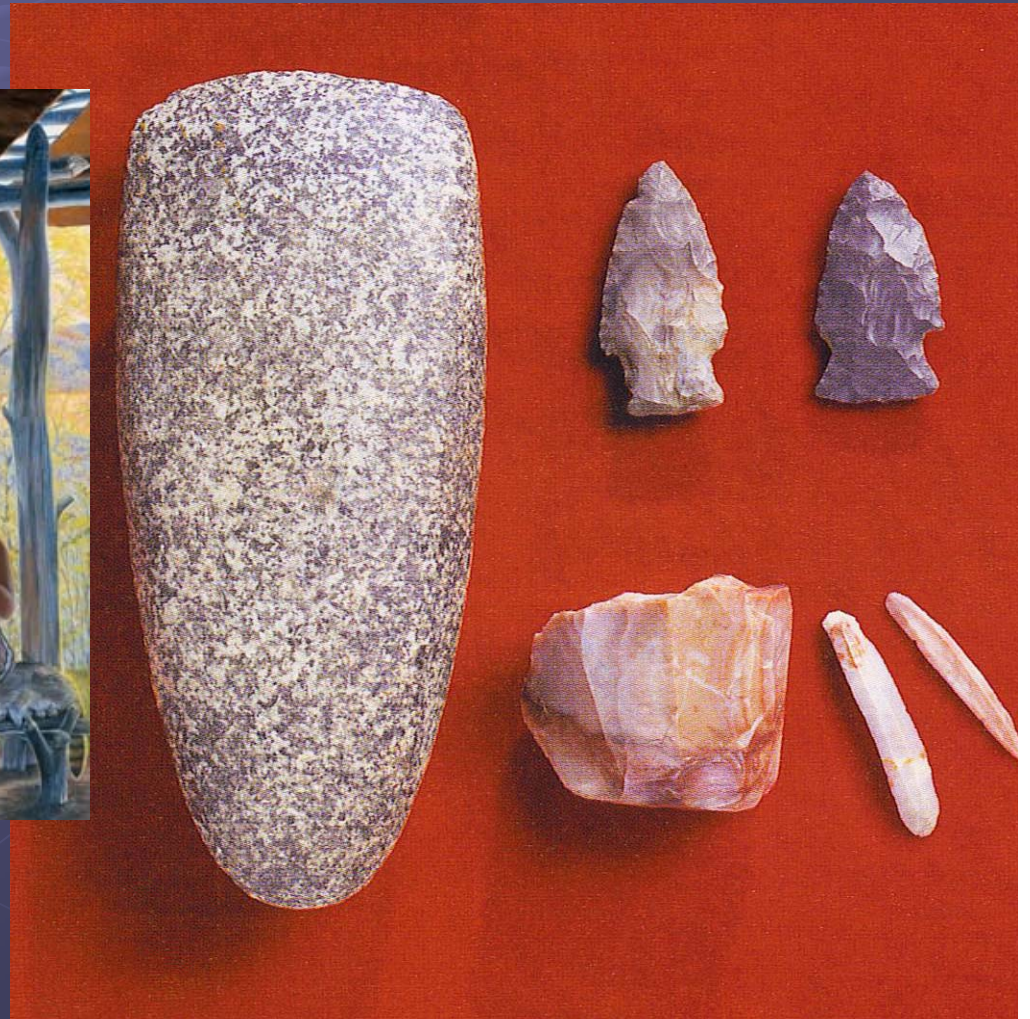


# The Middle Woodland Period

50 BC to 500 AD



Image provided by Voyager Media Group website



Permission provided by Voyager Media Group



# Ceremonialism and Trade

The Hopewell Interaction Sphere  
(ca. 2,100 to 1,500 BP)



Permission provided by Voyager Media Group

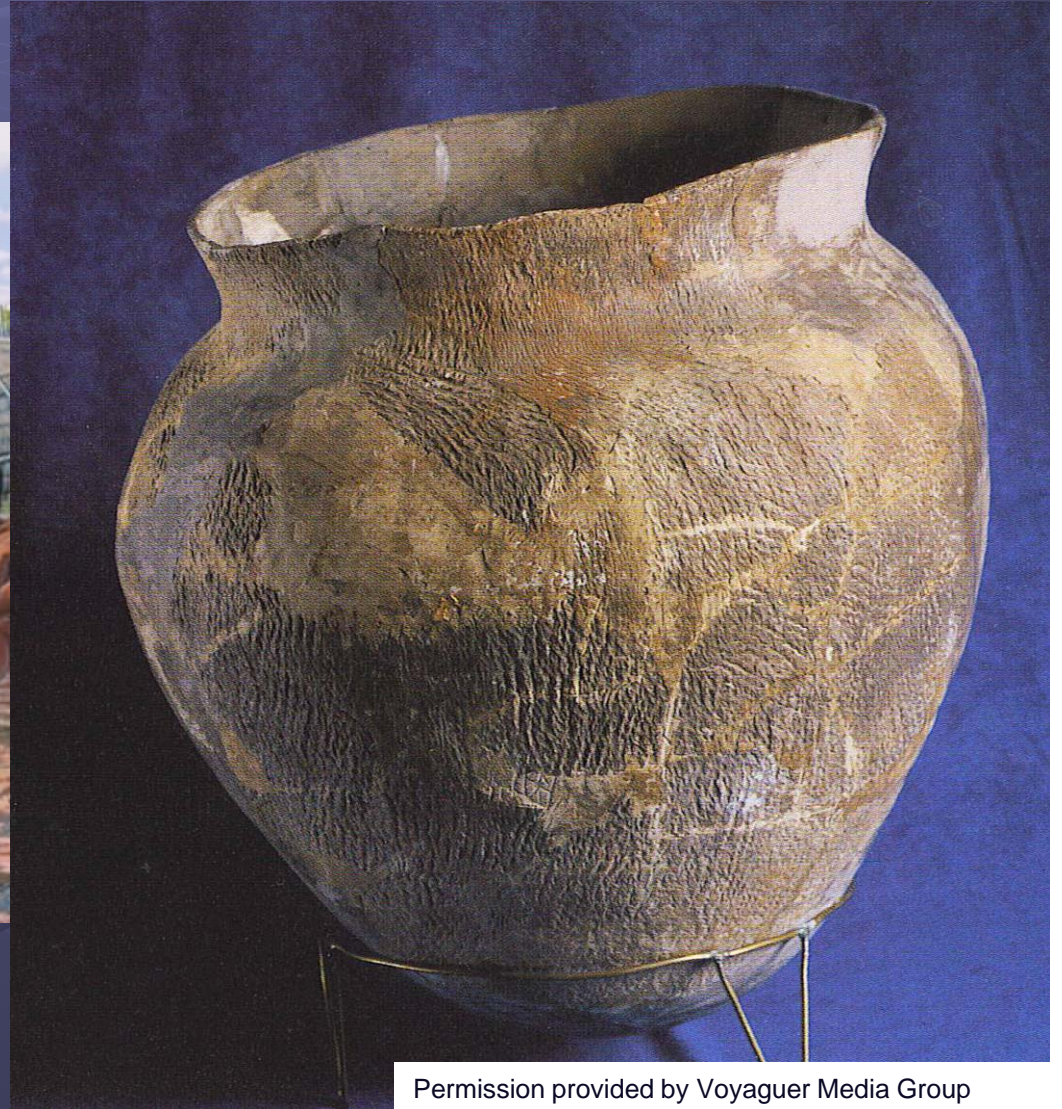


# The Late Woodland Period

500 to 1000 AD



Image provided by Voyageur Media Group website



Permission provided by Voyageur Media Group



# Late Woodland Technology

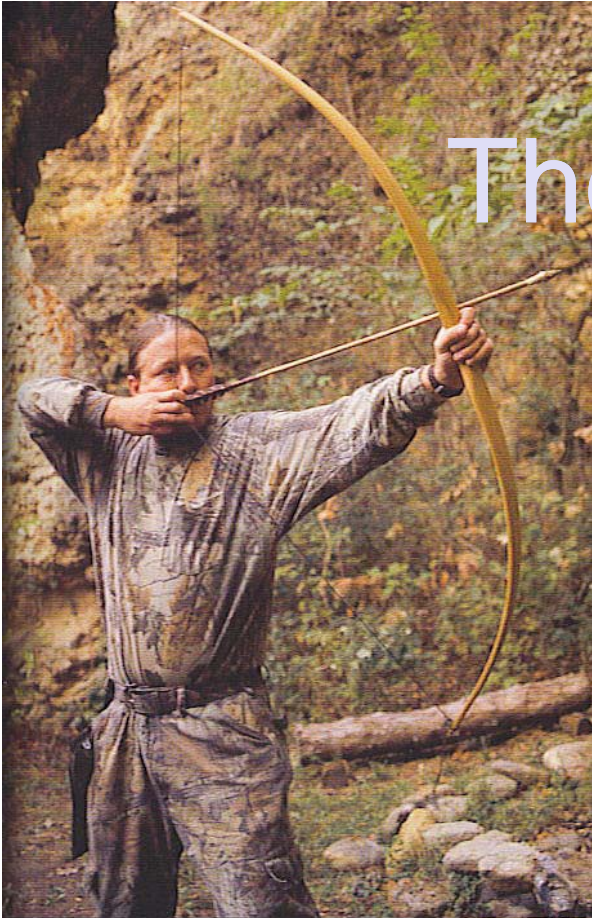


Permission provided by Voyager Media Group



# The Bow and Arrow

~800 AD



Permission provided by Voyager Media Group

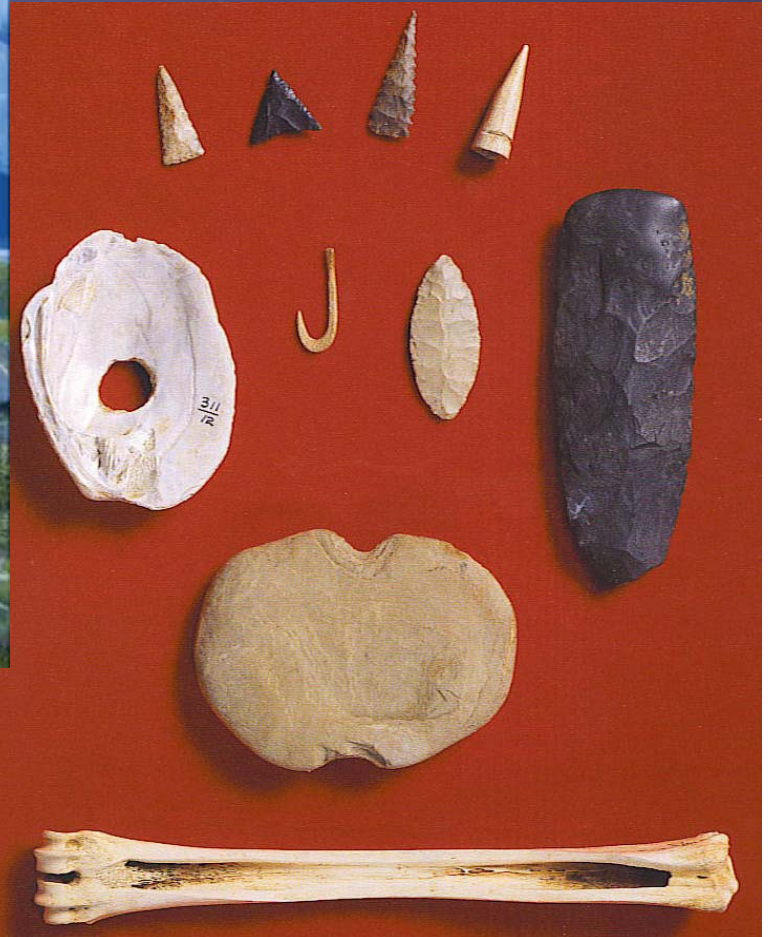


# The Late Prehistoric Period

1000 to 1540 AD



Image provided by Voyageur Media Group website



Permission provided by Voyageur Media Group



# Fort Ancient Culture



Photo by Kevin C. Nolan



Photo by Jacob E. Deppen



# Excavation



Photo by Kevin C. Nolan





# Reconstruction

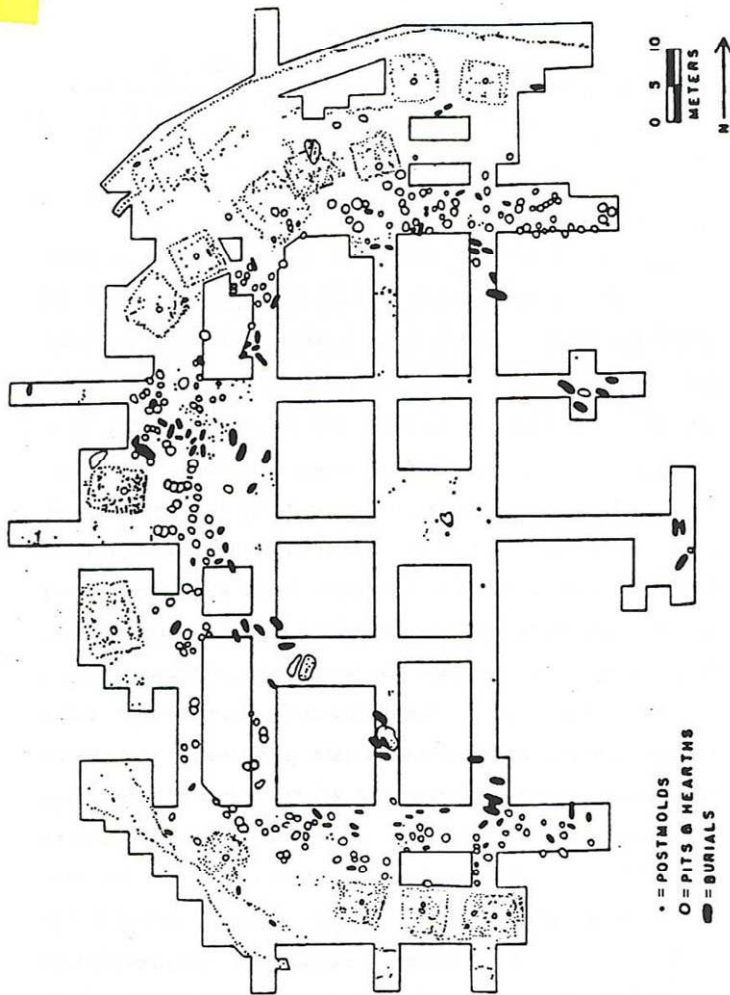
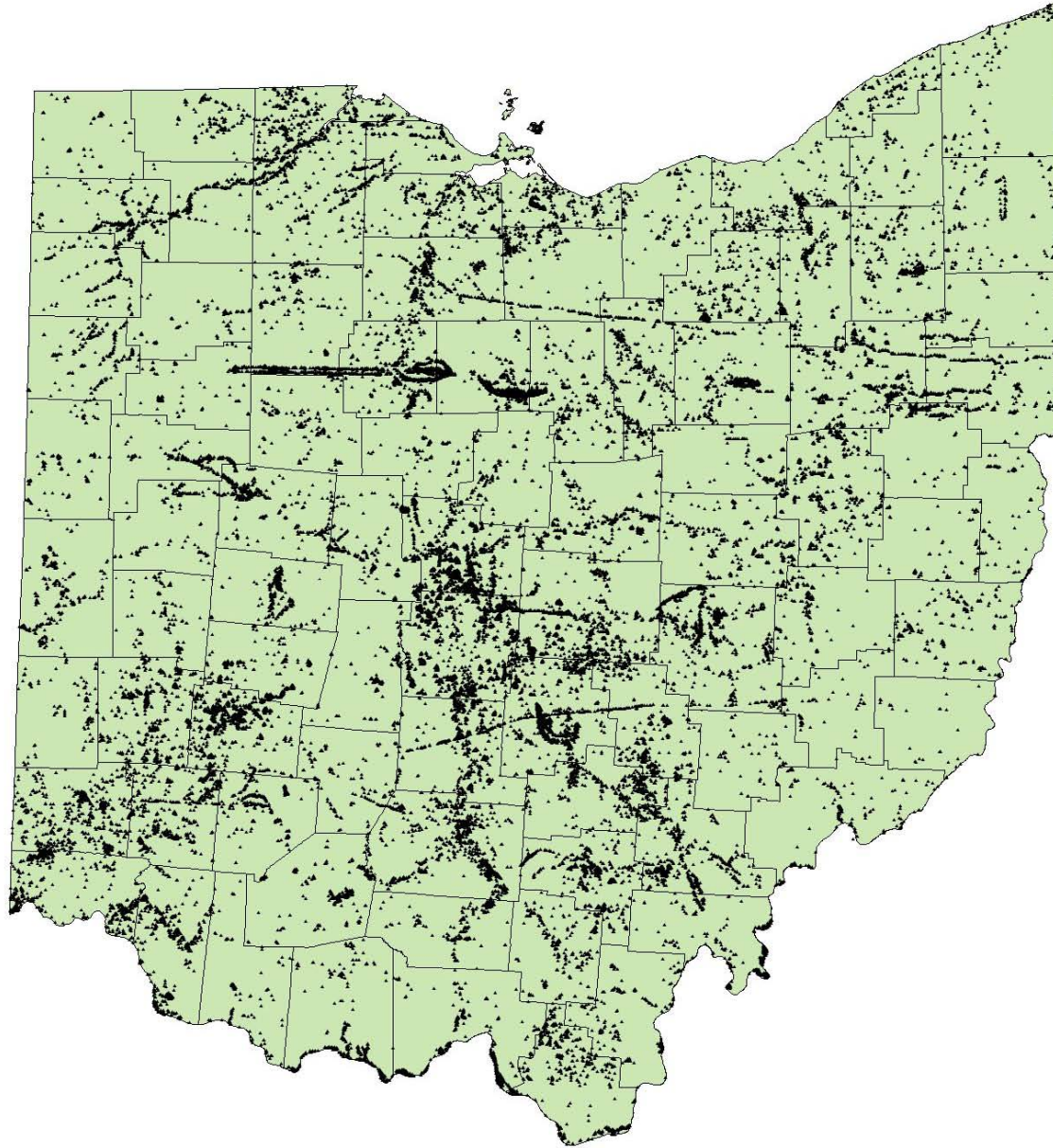


Figure 5.4.1. Map of the Incinerator Site (31)





# Archaeology is Everywhere!





**OHIO**  
HISTORY



With the support of the  
*U.S. Department of the Interior's  
Historic Preservation Fund*  
and the  
*Ohio Historic Preservation Office  
of the Ohio Historical Society*

This project was made possible in part by a grant from the U.S. Department of the Interior's Historic Preservation Fund, administered by the Ohio Historic Preservation Office of the Ohio Historic Society

U.S. Department of Interior regulations prohibits unlawful discrimination in departmental federally assisted programs on the basis of race, color, national origin, age or disability. Any person who believes he or she has been discriminated against in any program, activity, or facility operated by a recipient of Federal assistance should write to: Office of Equal Opportunity, U.S. Department of the Interior, National Park Service, 1849 C Street, N.W. Washington, D.C. 20240.